



THE MARINE AREAS OF THE PARK

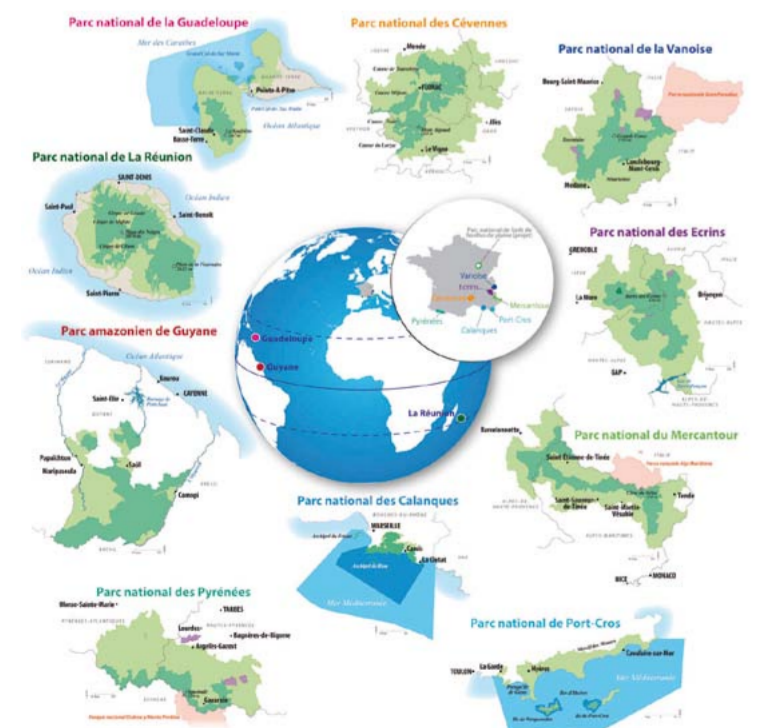
A guide to rules, customs and good practices

WHAT IS A NATIONAL PARK ?

It is an exceptional natural area whose landscapes, biodiversity, cultural richness and features justify an enhanced protection and a stronger management in order to ensure the durability of such heritages.

French national parks include two different areas. The «heart», that benefits from enhanced protection and specific regulations, and the «area of support», on land, in ecological solidarity with the «heart», where districts commit on a voluntary basis to facilitate its sustainable development, with the support of the Park. At sea, the «adjacent maritime area» is also concerned with sustainable development issues. However, it is not covered by the specific regulations of the Park.

Benefiting from a special protection, national parks strive for excellence in terms of management of natural environments. This is provided by a public institution under the supervision of the Ministry of Environment. However, the Management Board is mainly composed of local stakeholders. The functioning of the Park is mainly based on extensive consultation.



France counts 10 national parks: the Vanoise, Port-Cros, the Pyrenees, the Cevennes, the Ecryns, the Mercantour, Guadeloupe, Guyane, Reunion and the Calanques. Their activity is supervised by a public institution called Parcs nationaux de France (www.parcnationaux.fr).

PROTECTING THE SEABED : ENDANGERED SPECIES

Mediterranean «trottoir» (*Lithophyllum lichenoides*): This build-up of coralline algae hosts many animal and plant species. It develops within the cracks and small inlets hit by the swell, forming some sort of «trottoirs» (French word for pavements). It grows very slowly and is particularly sensitive to trampling and pollution.

The coralligenous : It is made up of natural blocks composed of encrusting algae. These host many animal species which, by digging them, create welcoming shelters for numerous organisms. The coralligenous is a favourite place for scuba divers in the Mediterranean area. The drop-offs covered with virescent sea-whips (*Paramuricea clavata*) and the shoals of swallowtail seaperches that can be observed while scuba-diving above the coralligenous constitute only a small part of the incredible biodiversity of this habitat.

The posidonia meadows (*Posidonia oceanica*): The Posidonia is a seagrass playing a critical role within the Mediterranean ecosystem. The meadows it forms constitute a shelter, a larder and a breeding site for many species. They also prevent the coast from erosion, especially during winter storms. The posidonia meadows have a very slow root growth (1m per century) and are very vulnerable to pollution, anchors and infrastructures along the coast.



UNDERWATER PATHS : (RE)DISCOVER THE MEDITERRANEAN SEA

Underwater paths aim at initiating adults and children to the discovery of the Mediterranean marine environment by immersing in a coastal area. These can be traveled on the surface by any person knowing how to swim, with fins, mask and snorkel.

3 paths can be found within the area of the Park. These are indicated on the zoomed maps.

Underwater path of Saint Estève (Marseille) Zoom n°12
Five buoys delineate the path. The visit is free and open to all visitors.
Contact : frioul@cen-paca.org

Underwater path of the beach of la grande Mer (Cassis) Zoom n°19
Four buoys delineate the path. Paying visit including safety and diving equipment and informative brochures.
Contact : infos@centrecassidaiblee.com

Underwater path of the Mugel (La Ciotat) Zoom n°9
Paying path exclusively presented by a guide of the CPIE Provençal coast (French association for environment).
Contact : cpie.cp@atelierbleue.fr

NAVIGATIONAL MARKERS AND ANCHORING TECHNIQUES

Yellow buoys : Marking buoys delimiting prohibited or restricted areas (these can be spherical, conical, cylindrical, etc.).



White buoys : Designed to moor recreational and diving support vessels. Mooring buoys delimiting mooring areas for amateur yachtsmen are located in Port-Miou and in the bay of Cassis (for ships over 20 metres).

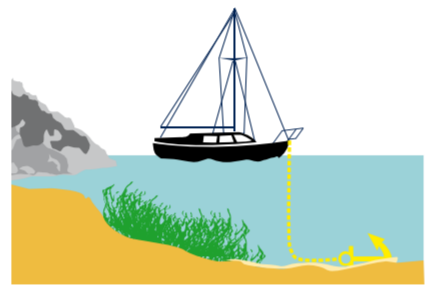


Mooring buoys mainly reserved for scuba-diving are located around the islands of Marseille, the island of Tiboulén, the Pharillons (Maïre island) and the Moyades (Riou island).

Underwater arches are also located around the Green island, the Mugel, La Ciotat and the Moyades (Riou island).

Reducing the impact of mooring :

Adapt your mooring (anchor and length + tip of the chain) to the size of your ship (the space between the ship and the seabed must be at least 3 times the size of the ship).

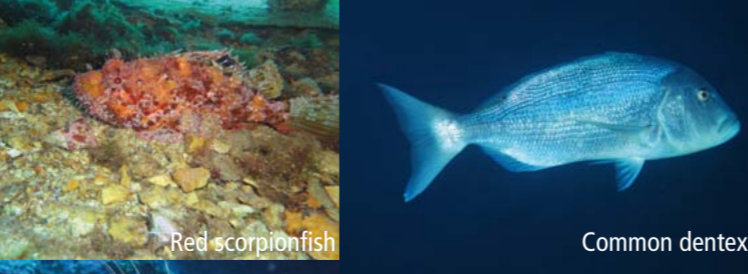
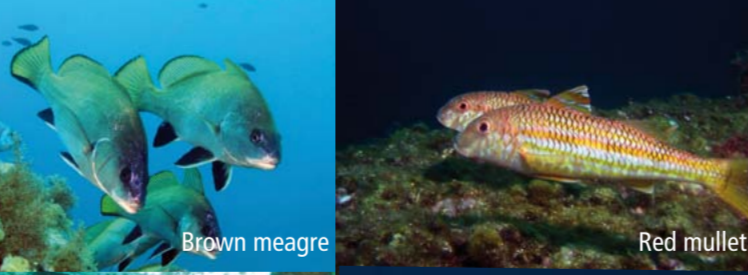
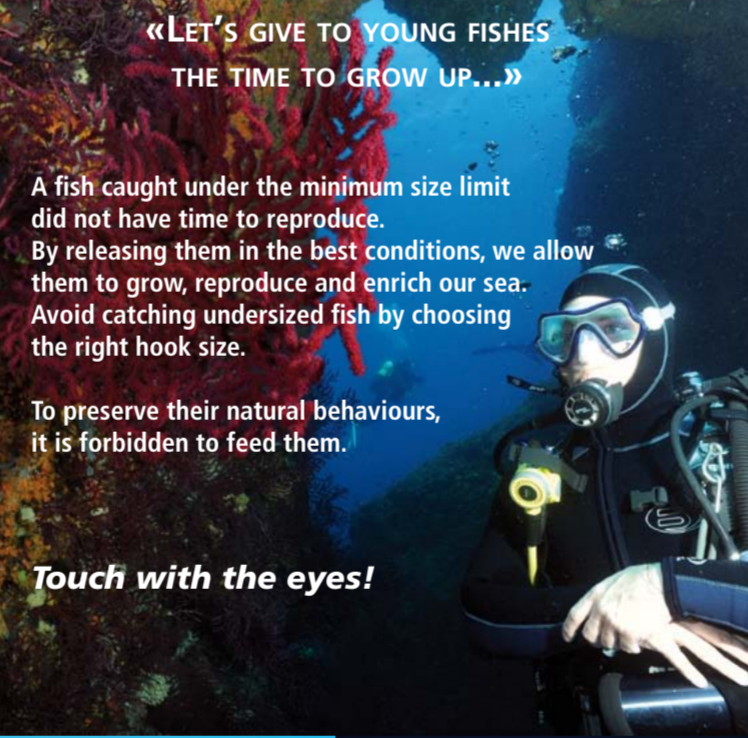


Choose preferably a sandy area (the seabed must be light) for mooring securely, efficiently and limiting the impact on the environment.

Moore head to wind, your ship will position itself.

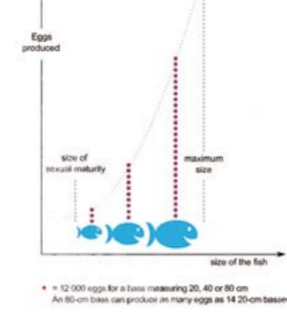
Avoid reversing. When possible, avoid mooring on the posidonia meadow.

Before departing, pull your chain while moving slowly to get above the anchor, then haul the anchor upright.



PROTECTING THE RESOURCE : THE «RESERVE EFFECT»

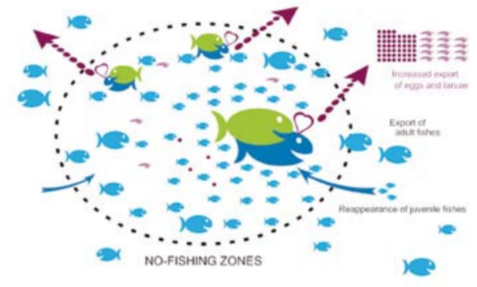
The will to protect certain marine areas along the coast of the Calanques is very old. The closed area of Endoume was imagined by Paul Gourret and set up in 1894 between the Marégraphe (Corniche Kennedy), and the beaches of the Prado.



Today the no-take zones (NTZs) carry on the will to enhance marine biodiversity and fisheries resources, with the indirect purpose of ensuring the durability of local professional small-scale fishing. Within this delimited and supervised area, they also preserve a thriving marine ecosystem where the natural balance of the environment, in terms of size and diversity, has been re-established.

The size of these areas, 7 in total, (marked in dark blue on the main map) accounts for 4,634 ha. Here fishes and invertebrates benefit from an enhanced protection in order to grow better, reproduce within these «refuge» areas and «supply» marine fishing areas.

In all the seas and the oceans in which they have been established, the no-fishing zones have shown their efficiency... let's follow their example!



Visit «Tartanes et bouillabaisse», our exhibition about fishing heritage. At the Château d'If from July 2013.

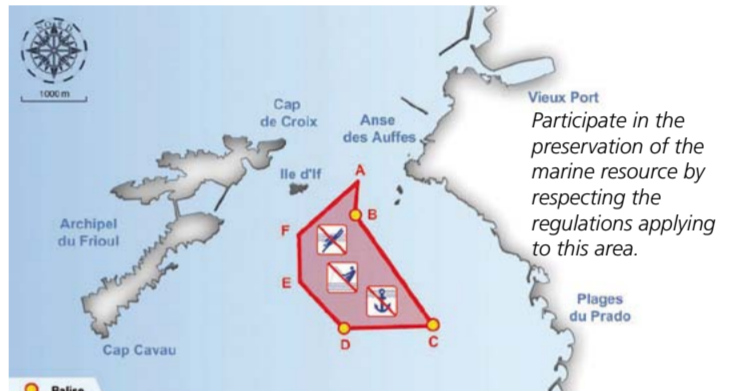
MAIN REGULATIONS ABOUT THE MARINE AREAS OF THE PARK

The following activities are prohibited within the marine areas of the Park

- Damaging the natural heritage
- Motorised sporting events
- Recreational fishing events
- Fishing within the no-take zones (NTZs) See coordinates on the map
- Using electric or hydraulic assist devices while practising recreational fishing
- Practising jet-ski (using watercrafts) or any water sport involving motorised equipment (waterskiing, parasailing)
- Using sound diffusion devices on board passenger vessels within the areas listed in the decree

OPERATION «RÉCIFS PRADO» : ENHANCING BIODIVERSITY IN THE SOUTH BAY

In 2008, the city of Marseille has immersed 400 artificial reefs in The Prado bay. These underwater ecological habitats have been specifically designed to repopulate, in a few years, previously rich seabeds that have become unproductive. Because species and ecosystems need time and quietness to settle in the reefs, all types of fishing, mooring, scuba-diving and free-diving are prohibited in this area.



MANAGE HUMAN USE

The creation of the Calanques National Park, by raising awareness about this area, could accelerate the increase of an attendance rate already very high in some areas. Controlling this situation is a critical objective.

Regulations have been implemented in order to supervise the number of visitors :

The loading and unloading of passengers within the heart of the Park for commercial and semi-commercial activities are prohibited (except for the landing stages located near the Green Island and the Château d'If).

Unloading on the Mediterranean «trottoirs» (*Lithophyllum lichenoides*) is prohibited.

Unloading on the Island of Riou is only allowed from sunrise to sunset in the following locations:
- On the western and north-western coast between the calanques of Monastério and Boulegade.
- On the two marked paths going from the calanque of Monastério to the col de la Culate and the calanque of Boulegade.

Ships over 20 metres overall length cannot access the Calanques of En Vau and Port Pin. A derogation is granted to some passenger vessels in order to reach the end of the mooring area.

For the security of less visible visitors (bathers, especially kayakers) but also for the respect of the quietness of the environment (noise and waves reduction, etc.), the speed limit is 5 knots within 300 metres from the coast.

The land and coastal areas located in the heart of the Park are also subjects to prefectural regulation in terms of fire hazard. When the massifs are closed to the public, landing on beaches and rocks is prohibited.



USEFUL CONTACTS

Emergency contacts : VHF Channel 16

CROSS Med : 0033 (0)4 94 61 16 16
or if you call from a mobile phone : 112

Harbour master's offices : VHF Channel 9

Marseille
Old Port : 0033 (0)4 91 99 75 60
Frioul : 0033 (0)4 91 99 76 01
Pointe Rouge : 0033 (0)4 91 99 75 67

Cassis
Harbour of Cassis : 0033 (0)4 42 32 91 65
Port Miou : 0033 (0)4 42 01 96 24

La Ciotat
Port Vieux SEMIDEP : 0033 (0)4 42 83 80 27
Nouveau port : 0033 (0)4 95 09 52 60
Harbour of Saint-Jean : 0033 (0)4 42 83 26 97
Port des Capucins : 0033 (0)4 42 71 40 73

St Cyr
Harbour of St Cyr : 0033 (0)4 94 26 44 49

Marine forecast : 32 50 (1.35€/call/min)

Access to forests : 0033 (0)811 20 13 13
(www.bouches-du-rhone.gouv.fr)

Calanques National Park
Etablissement public du Parc national des Calanques
Parc Valad - Impasse Paradou - Bât A4 - 13009 Marseille
contact@calanques-parcnational.fr

This document has been produced in partnership with



Cover photo © Patrick Guzik / Trottoir à lithophyllum, Chapon, Saint-Pierre © Anne-Laure Clément / Coralligène, Cortis, Rouget © Frédéric Fedorovsky / Posidonie, Piongue © Olivier Bianchini / Dent, Mérou brun © Hervé Théry / Sar à tête noire © Henri Ekenazi / Sentier sous-marin haut © CPIE Côte provençale / Sentier sous-marin bas © Mathieu Imbert-Can Paca / Boîtes de mouillage © PNCAl / Schéma mouillage © Ville de Marseille / Illustration barquette © Pierre-Emmanuel Dequert / 2013 Map of the buoys - Main maritime regulations © PNCAl
Produced by : Calanques National Park - October 2013 / Printing : CCI Marseille

THE RIGHT REFLEXES

Signals
Professional fishing
Respect the equipment of professional fishermen.



Do not moor on or between flags (red or black) indicating the presence of a net or a trap.

Reduce pollution
Waste management
Before departing reduce the number of packages on board to a strict minimum and think about waste sorting solutions. Do not throw anything overboard, bring everything back to land.

Black waters
Equip yourself with black water storage tanks (toilets) and empty them in the harbour facilities. Never flush your toilet while moored in a swimming area.

Divers
Divers, free-divers, indicate your position with a buoy or a mast equipped with the Alpha flag.



Yachtsmen : stay at least 100 m away from this flag and reduce speed.

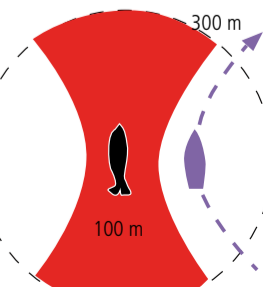
Fuels
When filling your tank, make sure you use adaptors, funnels or any other tool in order to prevent overflowing.

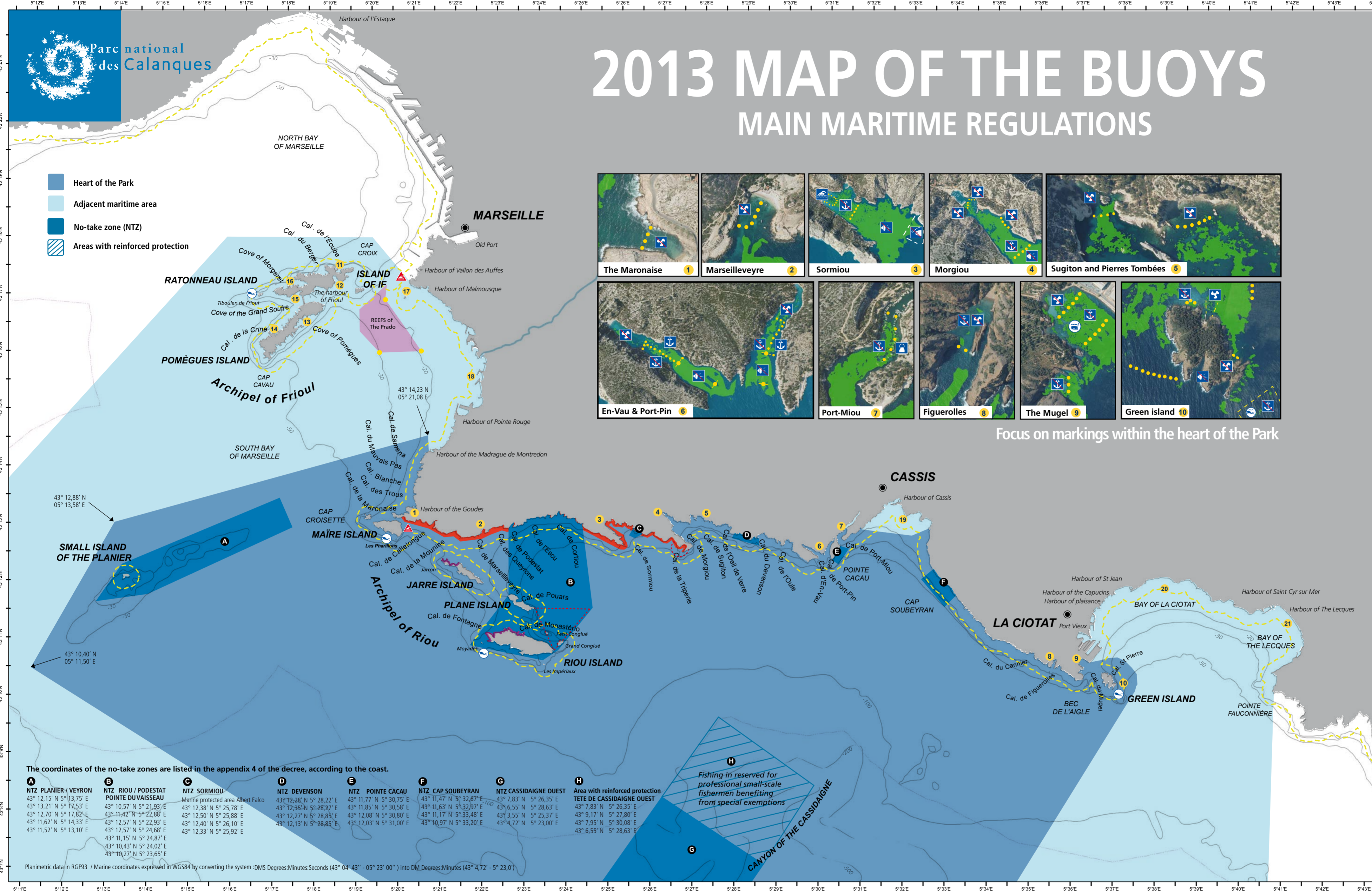
Polluting products
When purchasing antifouling agents or cleaning products for your ship, choose the more environmentally friendly.

Approaching marine mammals
Groups of cetaceans must always be approached with respect (from behind and with reduced speed). The approaching must be immediately interrupted if the group includes babies or seems to be bothered.

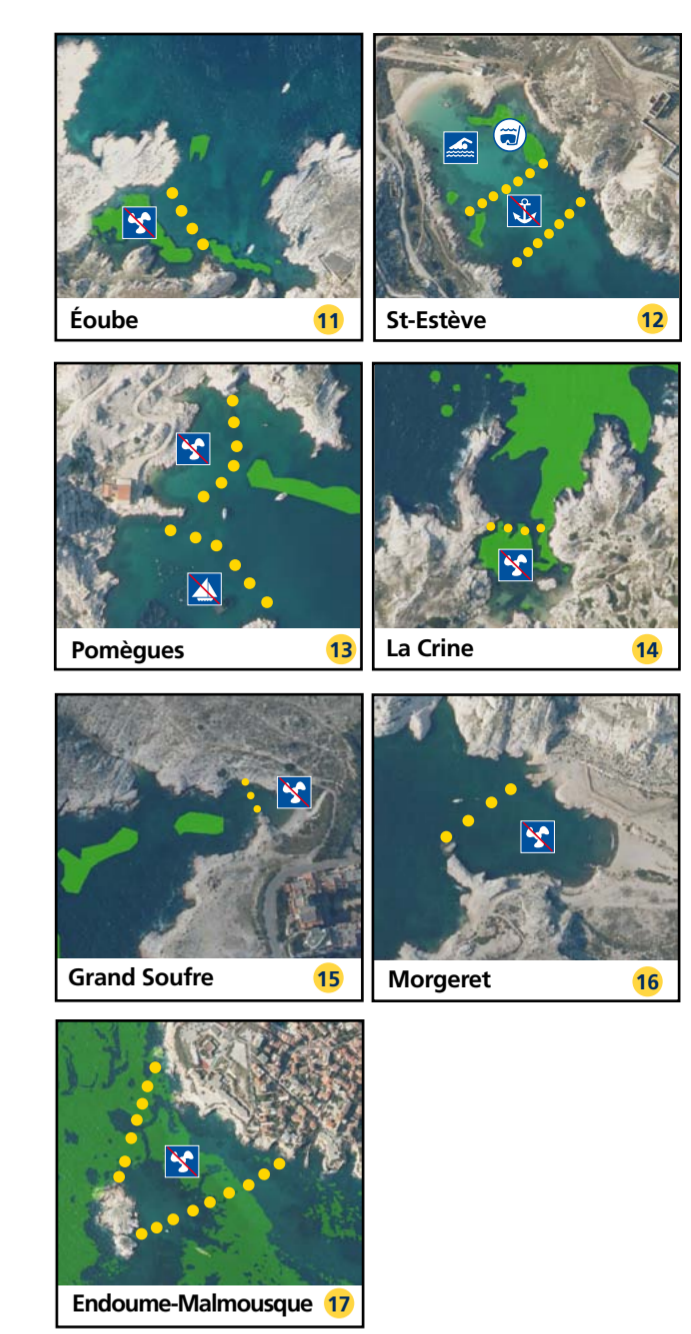
For instance, an absconding behaviour (acceleration, change of direction, search for distance) must be interpreted as a disturbance.

It is dangerous and prohibited to enter into the water and try to approach them or touch them.

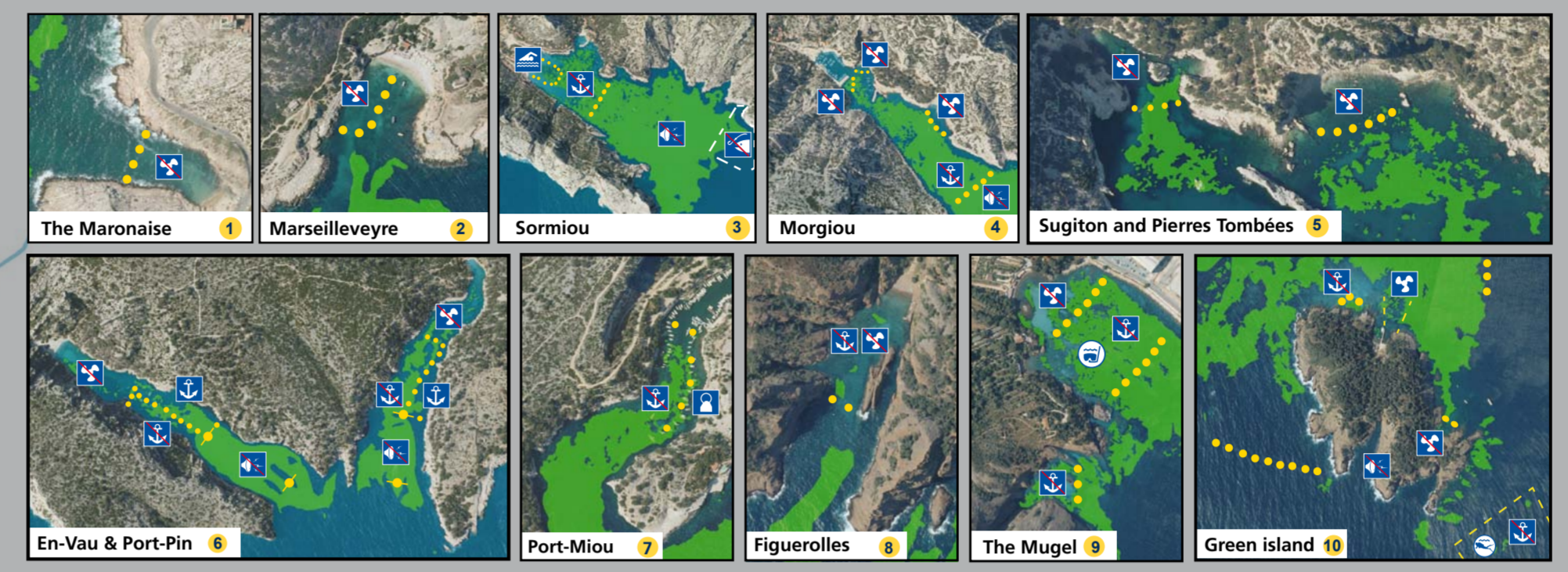




Focus on markings within the Adjacent maritime area (AMA) of the Park



Focus on markings within the heart of the Park



- CAPTION OF THE MAP OF THE BUOYS**
- 300 metres area : the maximum speed limit is 5 knots
 - Marking buoys
 - Jet-ski channel
 - Kite-surf channel
 - Training area for light sailing boats
 - Area strictly reserved for bathers
 - Dangerous area. Be careful and observe speed limits. Pay attention to swimmers
 - Ecological buoy for recreational ships
 - Mooring area
 - Underwater discovery path
 - Ecological buoy for diving
 - Diving prohibited area
 - Access channel for motor vehicles
 - Noise disturbance is prohibited
 - Mooring is prohibited in this area
 - Motor vehicles are prohibited in this area
 - All fishing prohibited (NTZ)
 - Sailing is prohibited in this area
 - Practising jet-ski (using watercrafts) is forbidden within 300m from the coast and everywhere inside the marine heart of the Park
 - Bathing is prohibited in this area
- OTHER EXISTING REGULATIONS**
- Regulated spearfishing
 - Location of artificial reefs (Fishing, diving, free-diving and mooring are prohibited)
 - Posidonia meadows (Protected species)
 - Riou : Authorised berthing and landing areas
 - Archaeological protection zone (Diving, mooring and dredging are prohibited)

Focus on markings within the Adjacent maritime area (AMA) of the Park

